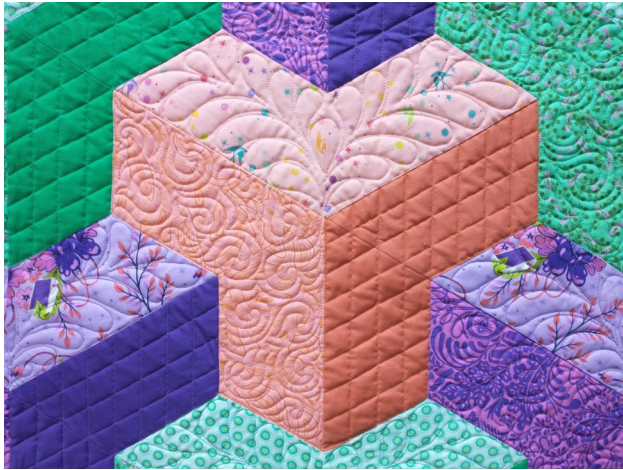


Ypsilon



Take your quilting to the next level with this illusion quilt! The play of angles and shades give the quilt depth and dimension.

One simple shape used in construction makes this project much easier to sew than you would suppose!

FABRIC REQUIREMENTS

Use one colorway, or choose three of your favorite colors, then select a light, medium, and dark fabric* for each colorway, with good contrast between shades.

Color #1 (Bluegreen in example quilt)	64" x 82" Quilt	46" x 58" Throw
Light Print	1-1/8 yards	3/4 yard
Medium	7/8 yard	3/4 yard
Dark	7/8 yard	3/4 yard

Color #2: (Orange in example)		
Light	7/8 yard	1/2 yard
Medium	7/8 yard	1/2 yard
Dark	7/8 yard	1/2 yard

Color #3: (Purple in example)		
Light	7/8 yard	5/8 yard
Medium	7/8 yard	5/8 yard
Dark	7/8 yard	5/8 yard

Binding	3/4 yard	1/2 yard
---------------	----------	----------

Backing	5 yards	3 yards
---------------	---------	---------

* Directional prints may require additional yardage

HELPFUL TOOLS:

Fabric marking pen, Acrylic template/ruler with a 60-degree angle such as a Hexagon or Half-hexagon ruler.

My colors



AccuQuilt friendly! May use Go! die #55437 for the large quilt

Skill Level: ✂✂ Confident Beginner

Ypsilon Quilt Pattern by Deonn Stott © 2022 All Rights Reserved

PO Box 608 Heber City, UT 84032

deonn@quiltscaresqs.com IG @quiltscapees

WWW.QUILTSCAPESQUILTING.COM

QS-YP222



Ypsilon Coloring Page

